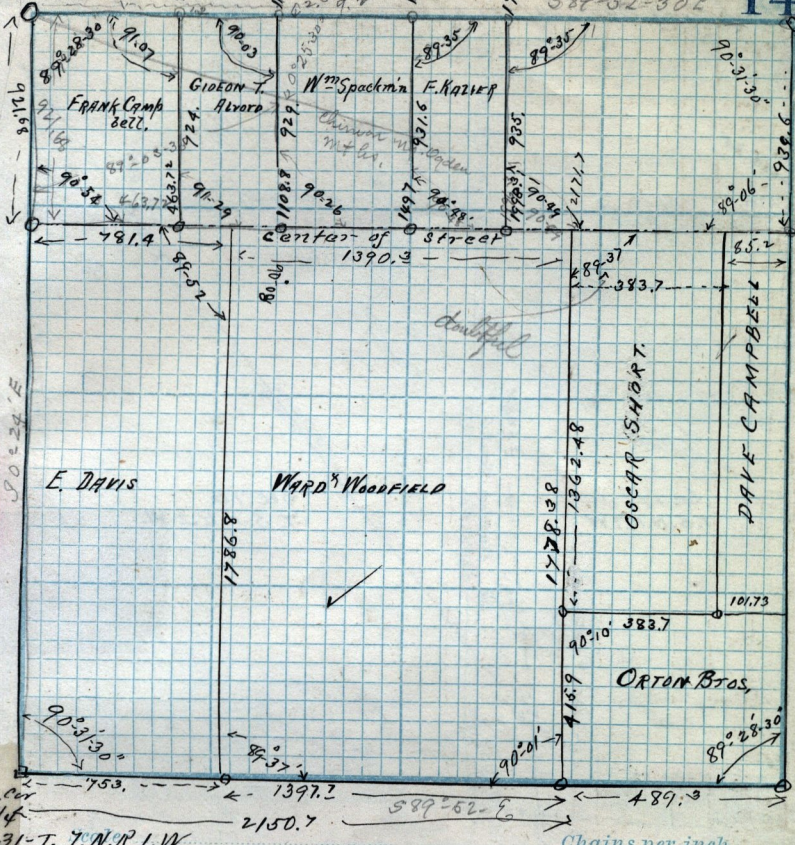


Quar. Cor

141 3

589°52'30"E

Sec 31 357.7



amounts to .341 per acre.
 T-7-N-R-1-W

N.E. 1/4 SEC. 31, T. 7. N. R. 1. W

See page 90

- to here -
 ✓

Chains per inch.

Sec 31

EC. Coy
 Sec
 G.N.R.
 W.

part Note
 53

114.68

33°N

1/2 W

N. 7. E